



**Ecopax
Catalogue
2025**



Version 20241029





Superior Products Made for Today

We believe that our products reflect what we do, our customers reflect who we are, and their success is ours.

Ecopax DNA



Premium Quality
Competitive Pricing
Exceptional Customer Service



To-Go Foodware

Catering

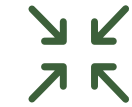
Pebble Box Containers

Game changing takeout solution.



Elegant, eco-conscious, durable, and microwaveable

- 40% earth minerals
- BPA & PFAS Free
- Reduce use of plastic
- Smaller environmental footprint
- Microwave-Safe and cut resistant
- Premium quality
- Elegant presentation for a high-end look
- Effective barrier against moisture and grease
- Suitable for both cold and hot applications
- Stackable



Grease Resistant • Durable • Microwaveable • Reduce Plastic Usage • Reusable • BPA & PFAS Free



PP201-BK-340 (BLACK only)

7.76" X 5.87" X 2.60", 1-COMP, PP
Quantity: 340 (2 sleeves of 170 ct)
Case Size: 17.40" x 12.21" x 15.95"
Case Cube: 1.96 ft³
Gross Case Weight: 26.00 lbs
Ti/Hi: 8 x 6



PP203-300 (IVORY only)

8.13" X 6.5" X 2.63", 1-COMP, PP
Quantity: 300 (2 sleeves of 150 ct)
Case Size: 19.21" x 16.93" x 13.39"
Case Cube: 2.52 ft³
Gross Case Weight: 29.00 lbs
Ti/Hi: 7 x 6



PP204 (IVORY only)

8.86" X 5.86" X 2.79", 1-COMP, PP
Quantity: 150 (1 sleeve of 150 ct)
Case Size: 18.82" x 9.09" x 12.09"
Case Cube: 1.97 ft³
Gross Case Weight: 15.00 lbs
Ti/Hi: 10 x 7



PP206
PP206-BK (BLACK or IVORY)

9.25" X 6.50" X 2.25", 1-COMP, PP
Quantity: 150 (1 sleeve of 150 ct)
Case Size: 18.50" x 9.45" x 13.39"
Case Cube: 1.35 ft³
Gross Case Weight: 18.00 lbs
Ti/Hi: 10 x 7



PP241 (IVORY only)

7.88" X 8.00" X 2.50", 3-COMP, PP
Quantity: 150 (1 sleeve of 150 ct)
Case Size: 18.50" x 7.87" x 15.75"
Case Cube: 1.33 ft³
Gross Case Weight: 19.51 lbs
Ti/Hi: 12 x 6



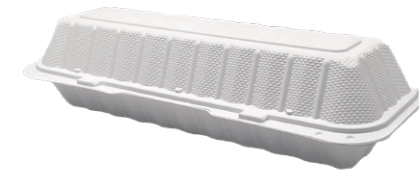
PPs241 (IVORY only)

7.88" X 8.00" X 2.35", 3-COMP, PP
Quantity: 150 (1 sleeve of 150 ct)
Case Size: 18.50" x 7.87" x 15.75"
Case Cube: 1.33 ft³
Gross Case Weight: 20.00 lbs
Ti/Hi: 12 x 6



PP622-BK (BLACK only)

7.44" X 3.50" X 2.19" SMALL HOT DOG CONTAINER, 1 COMP, PP, HINGE CONTAINER
Quantity: 300 (2 sleeves of 150 ct)
Case Size: 19.02" x 8.50" x 14.02"
Case Cube: 1.32 ft³
Gross Case Weight: 13.00 lbs
Ti/Hi: 10 x 6



PP1243 (IVORY only)

13.23" X 4.72" X 3.31" HOAGIE CONTAINER, NON-VENTED, PP
Quantity: 150 (1 sleeve of 150 ct)
Case Size: 18.5" x 10.28" x 13.62"
Case Cube: 1.50 ft³
Gross Case Weight: 19.53 lbs
Ti/Hi: 10 x 7



PP225
PP225-BK (BLACK or IVORY)

6.00" X 6.00" X 3.25", 1-COMP, PP
Quantity: 250 (2 sleeves of 125 ct)
Case Size: 19.00" x 12.25" x 12.00"
Case Cube: 1.616 ft³
Gross Case Weight: 19.00 lbs
Ti/Hi: 7 x 8



PP225-BK-480

6.00" X 6.00" X 3.25", 1-COMP, PP
Quantity: 480 (4 sleeves of 120 ct)
Case Size: 24.33" x 17.72" x 12.20"
Case Cube: 3.04 ft³
Gross Case Weight: 31.00 lbs
Ti/Hi: 8 x 8



PP883 (BLACK or IVORY)

8.00" X 8.00" X 3.00", 3-COMP, PP
Quantity: 150 (1 sleeve of 150 ct)
Case Size: 18.50" x 8.25" x 17.00"
Case Cube: 1.50 ft³
Gross Case Weight: 22.00 lbs
Ti/Hi: 10 x 5



PP883s (BLACK or IVORY)

8.00" X 8.00" X 3.00", 1-COMP, PP
Quantity: 150 (1 sleeve of 150 ct)
Case Size: 18.50" x 8.25" x 17.00"
Case Cube: 1.50 ft³
Gross Case Weight: 22.00 lbs
Ti/Hi: 10 x 5



PP993 (BLACK or IVORY)

9.13" X 8.81" X 3.00", 3-COMP, PP
Quantity: 150 (1 sleeve of 150 ct)
Case Size: 20.50" x 9.00" x 18.50"
Case Cube: 1.98 ft³
Gross Case Weight: 28.00 lbs
Ti/Hi: 10 x 5



PP993s (BLACK or IVORY)

9.13" X 8.81" X 3.00", 1-COMP, PP
Quantity: 150 (1 sleeve of 150 ct)
Case Size: 20.50" x 9.00" x 18.50"
Case Cube: 1.98 ft³
Gross Case Weight: 28.00 lbs
Ti/Hi: 10 x 5

* Not all recycle facilities accept this plastic material type

Pebble Plates

Plates like no others.

Made with 40% earth minerals and are durable, grease-resistant, microwaveable and recyclable. This significant reduction in plastic material results in a smaller environmental footprint for a happier planet.



Grease Resistant • Durable • Microwaveable • Reduce Plastic Usage • Reusable • BPA & PFAS Free



PP071
PP071-BK NEW
BLACK or IVORY

7" PLATES, 1-COMP, PP
Quantity: 900 (6 sleeves of 150 ct)
Case Size: 21.26" x 7.28" x 11.81"
Case Cube: 1.057 ft³
Gross Case Weight: 25.00 lbs
Ti/Hi: 10 x 8



PP091
PP091-BK BLACK or IVORY

9" PLATES, 1-COMP, PP
Quantity: 400 (2 sleeves of 200 ct)
Case Size: 18.11" x 9.09" x 9.09"
Case Cube: 0.87 ft³
Gross Case Weight: 21.00 lbs
Ti/Hi: 10 x 8



PP093
PP093-BK BLACK or IVORY

9" PLATES, 3-COMP, PP
Quantity: 400 (2 sleeves of 200 ct)
Case Size: 18.11" x 9.09" x 9.09"
Case Cube: 0.87 ft³
Gross Case Weight: 21.00 lbs
Ti/Hi: 10 x 8



PP101
PP101-BK BLACK or IVORY

10.25" PLATES, 1-COMP, PP
Quantity: 400 (2 sleeves of 200 ct)
Case Size: 18.50" x 10.43" x 10.43"
Case Cube: 1.17 ft³
Gross Case Weight: 29.00 lbs
Ti/Hi: 10 x 7



PP103
PP103-BK BLACK or IVORY

10.25" PLATES, 3-COMP, PP
Quantity: 400 (2 sleeves of 200 ct)
Case Size: 18.50" x 10.43" x 10.43"
Case Cube: 1.17 ft³
Gross Case Weight: 29.00 lbs
Ti/Hi: 10 x 7

* Not all recycle facilities accept this plastic material type

Pebble Plates PET Cover

Cover up! For all the right reasons!

Perfectly Matching Plate and Cover Duo

Clear cover enhances visual presentation



PET Cover

- Prevents contamination
- Snap lock feature
- Textured side exterior for better handling
- Stackable, transportable with ease



PE-09LD

9" PLATE DOME LID, CLEAR, PET
Quantity: 500 (4 sleeves of 125 ct)
Case Size: 19.09" x 19.09" x 21.06"
Case Cube: 4.44 ft³
Gross Case Weight: 22.00 lbs
Ti/Hi: 4 x 4



PE-10LD

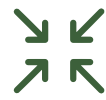
10" PLATE DOME LID, CLEAR, PET
Quantity: 500 (4 sleeves of 125 ct)
Case Size: 21.46" x 21.46" x 21.06"
Case Cube: 5.61 ft³
Gross Case Weight: 34.00 lbs
Ti/Hi: 4 x 4



To-Go Foodware

Catering

Tableware



Reduce Plastic Usage • Reusable • BPA & PFAS Free

Pebble 2-Piece (PCO Series)

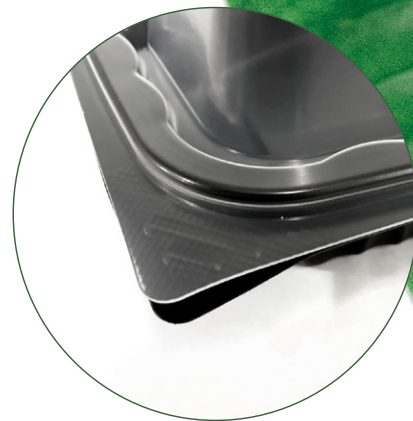
Seeing is believing.

PCO products - Pebble 2-Piece are designed so the people and takeout containers interact most efficiently and safely while preserving food quality. The base of this dynamic duo is made with MFPP material while the separatable cover is made with PP plastic.

- MFPP (tray) and PP (lid)
- Optional vents
- Secure locking system
- Stackable for easy takeout
- Microwaveable
- Textured exterior design provide strength and durability
- Premium clear transparent lid enhances food presentation
- Smaller environmental footprint



Stack easily and securely.



Smart locking mechanism with sound click indication.

Ergonomically engineered.

Inspired by users' takeout experiences.



PCO225-BK-320

6" X 6" X 3.25"
 1 COMPARTMENT TRAY
 WITH TRANSLUCENT NON-VENTED
 LID, COMBO PACK, PEBBLE
 Quantity: 320 Trays and 320 Lids
 Case Size: 23.50" x 11.80" x 11.80"
 Case Cube: 1.89 ft³
 Gross Case Weight: 23.50 lbs
 Ti/Hi: 8 x 5



PCO883-BK-150

8" X 8" X 3"
 3 COMPARTMENT TRAY
 WITH TRANSLUCENT VENTED
 LID, COMBO PACK, PEBBLE
 Quantity: 150 Trays and 150 Lids
 Case Size: 22.19" x 8.50" x 16.44"
 Case Cube: 1.74 ft³
 Gross Case Weight: 17.00 lbs
 Ti/Hi: 9 x 6



PCO883s-BK-150

8" X 8" X 3"
 1 COMPARTMENT TRAY
 WITH TRANSLUCENT VENTED
 LID, COMBO PACK, PEBBLE
 Quantity: 150 Trays and 150 Lids
 Case Size: 22.19" x 8.50" x 16.44"
 Case Cube: 1.74 ft³
 Gross Case Weight: 17.00 lbs
 Ti/Hi: 9 x 6



2PP-993-BK

9" X 9" X 3"
 3 COMPARTMENT TRAY, PEBBLE
 Quantity: 300 Trays
 Case Size: 22.83" x 9.25" x 18.31"
 Case Cube: 2.24 ft³
 Gross Case Weight: 28.00 lbs
 Ti/Hi: 9 x 5



2PP-993s-BK

9" X 9" X 3"
 1 COMPARTMENT TRAY, PEBBLE
 Quantity: 300 Trays
 Case Size: 22.44" x 9.25" x 18.31"
 Case Cube: 2.20 ft³
 Gross Case Weight: 28.00 lbs
 Ti/Hi: 9 x 5



2PP-9L

9" X 9" X 1.38"
 TRANSLUCENT VENTED LID, PP
 Quantity: 300 Lids
 Case Size: 21.26" x 9.25" x 18.31"
 Case Cube: 2.08 ft³
 Gross Case Weight: 19.00 lbs
 Ti/Hi: 9 x 5

To-Go Foodware

Catering

Tableware

Pebble Bowls

Bowl Appétit!

Take all your favorite appetizers home with our versatile appetizer-size bowls.



Round 12 oz bowl

- Premium transparent lid
- Stack easily and securely
- Prevent leakage
- Microwaveable
- Pebble Series material for bowl base
- Smaller environmental footprint
- Smart locking mechanism with flap tab
- Textured side exterior for better handling

Mac and Cheese
 Southern Soul Chili • French Onion Soup
 Spicy Kimchi Coleslaw • Fried Chicken
 Layered Hummus Dip • Crab Cake Bites
 Creamy Potato Salad
 ...and much more!



Fully recyclable where facilities exist.



PPB-12-BK

12 OZ BOWL.
 PP, PEBBLE
 Quantity: 720 (6 sleeves of 120 ct)
 Case Size: 16.25" x 10.93" x 20.00"
 Case Cube: 2.06 ft³
 Gross Case Weight: 24.00 lbs
 Ti/Hi: 10 x 5
 UPC Code: 00810054220954



PPBL-12

12 OZ BOWL LID
 PP, TRANSLUCENT LID
 Quantity: 720 (6 sleeves of 120 ct)
 Case Size: 16.25" x 10.93" x 16.13"
 Case Cube: 1.66 ft³
 Gross Case Weight: 10.00 lbs
 Ti/Hi: 10 x 5
 UPC Code: 00810054220961



Pebble Grande Tray & Lid

To-Go Foodware

Catering

Unique portion control

- PP material
- Secure locking system
- Textured exterior design provide strength and durability
- Premium clear dome shaped lid enhances food presentation
- Microwaveable
- Smaller environmental footprint



2PP-GT-BK

9.35" x 7.95" x 1.22"
 2 COMPARTMENT GRANDE TRAY
 PEBBLE
 Quantity: 320 (2 sleeves of 160 ct)
 Case Size: 21.50" x 9.76" x 16.46"
 Case Cube: 2.00 ft³
 Gross Case Weight: 26.00 lbs
 Ti/Hi: 8 x 6



2PP-GL

9.35" x 7.95" x 1.48"
 TRANSLUCENT NON-VENTED
 GRANDE LID, PEBBLE
 Quantity: 320 (2 sleeves of 160 ct)
 Case Size: 25.20" x 9.76" x 16.46"
 Case Cube: 2.34 ft³
 Gross Case Weight: 15.00 lbs
 Ti/Hi: 8 x 6

* Not all recycle facilities accept this plastic material type

To-Go Foodware Catering Tableware

EcoView PVS

Grease Resistant • Durable • Recyclable* • PFAS Free

Savory meal, deliciously visible.

Clear Top, Black Base

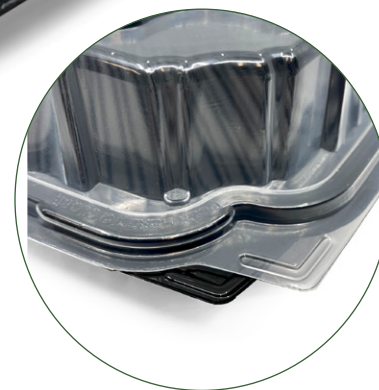
EcoView Features:

- Ultra durable, great for delivery
- Cut resistant
- Grease and moisture resistant
- Textured floor design with deep channels
- Microwavable
- Vents prevent condensation
- Stack lock feature boosts transport stability
- Slim pack - Reduced stack height for efficient storage
- Enhanced clear lid for premium presentation
- Snap lock closure ensures secure transporting

Hinged design brings more convenience



FUNCTIONALITY
Vent holes for better airing



UNMATCHED CLARITY:
Our Lid Lets You See More!

SECURE FEATURE
Click and lock mechanism



SMART DESIGN
Textured floor design with deep channels



PVS205-BK
9.76" X 6.54" X 3.31", 1-COMP, PP, HINGED CONTAINER, BLACK BASE CLEAR TOP
Quantity: 280 (2 sleeves of 140 ct)
Case Size: 23.90" x 13.31" x 19.76"
Case Cube: 3.64 ft³
Gross Case Weight: 30.00 lbs
Ti/Hi: 6 x 4
UPC Code-BK: 00810054221692



PVS225-BK
6.65" X 6.57" X 3.19", 1-COMP, PP, HINGED CONTAINER, BLACK BASE CLEAR TOP
Quantity: 280 (2 sleeves of 140 ct)
Case Size: 24.02" x 13.62" x 13.39"
Case Cube: 2.54 ft³
Gross Case Weight: 20.00 lbs
Ti/Hi: 5 x 7
UPC Code-BK: 00810054221685



PVS881-BK
8.07" X 8.07" X 3.03", 1-COMP, PP, HINGED CONTAINER, BLACK BASE CLEAR TOP
Quantity: 270 (2 sleeves of 135 ct)
Case Size: 23.23" x 16.73" x 16.34"
Case Cube: 3.67 ft³
Gross Case Weight: 29.00 lbs
Ti/Hi: 4 x 5
UPC Code-BK: 00810054222521



PVS991-BK
9.00" X 9.00" X 2.838", 1-COMP, PP, HINGED CONTAINER, BLACK BASE CLEAR TOP
Quantity: 150 (1 sleeve of 150 ct)
Case Size: 19.00" x 9.50" x 18.50"
Case Cube: 1.93 ft³
Gross Case Weight: 21.00 lbs
Ti/Hi: 9 x 5
UPC Code-BK: 00810054221340



PVS993-BK
9.00" X 9.00" X 2.838", 3-COMP, PP, HINGED CONTAINER, BLACK BASE CLEAR TOP
Quantity: 150 (1 sleeve of 150 ct)
Case Size: 23.94" x 9.45" x 18.70"
Case Cube: 2.45 ft³
Gross Case Weight: 21.00 lbs
Ti/Hi: 8 x 5
UPC Code-BK: 00810054221357



PVS101-BK
10.50" X 9.50" X 2.838", 1-COMP, PP, HINGED CONTAINER, BLACK BASE CLEAR TOP
Quantity: 150 (1 sleeve of 150 ct)
Case Size: 20.75" x 10.75" x 19.75"
Case Cube: 2.55 ft³
Gross Case Weight: 25.00 lbs
Ti/Hi: 10 x 5
UPC Code-BK: 00810054220800



PVS103-BK
10.50" X 9.50" X 2.838", 3-COMP, PP, HINGED CONTAINER, BLACK BASE CLEAR TOP
Quantity: 150 (1 sleeve of 150 ct)
Case Size: 23.94" x 10.91" x 20.08"
Case Cube: 3.04 ft³
Gross Case Weight: 25.00 lbs
Ti/Hi: 6 x 4
UPC Code-BK: 00810054222767

* Not all recycle facilities accept this plastic material type

EcoView PPT

Grease Resistant • Durable • Recyclable* • PFAS Free

360° Visual Experience.

Clear Top, Clear Base

360° clear view.

EcoView Features:

- Ultra durable, great for delivery
- Cut resistant
- Grease and moisture resistant
- Textured floor design with deep channels
- Microwavable
- Vents prevent condensation
- Stack lock feature enhances stability during transportation
- Slim pack - Reduced stack height for efficient storage
- Enhanced clear lid for premium presentation
- Snap lock closure ensures secure transporting

Hinged design brings more convenience



FUNCTIONALITY
Vent holes for better airing



SECURE FEATURE
Click and lock mechanism



SMART DESIGN
Textured floor design with deep channel



PPT-993S

9.17" X 8.78" X 3.11", 1-COMP, PP, HINGED CONTAINER, TRANSLUCENT, CLEAR BASE CLEAR TOP
Quantity: 150 (1 sleeve of 150 ct)
Case Size: 19.69" x 8.94" x 18.50"
Case Cube: 1.88 ft³
Gross Case Weight: 18.45 lbs
Ti/Hi: 10 x 5
UPC Code: 00810054222095



PPT-205

8.90" X 6.50" X 3.50", 1-COMP, PP, HINGED CONTAINER, TRANSLUCENT, CLEAR BASE CLEAR TOP
Quantity: 250 (2 sleeves of 125 ct)
Case Size: 18.15" x 12.99" x 18.03"
Case Cube: 2.46 ft³
Gross Case Weight: 20.86 lbs
Ti/Hi: 7 x 5
UPC Code: 00810054221999



PPT-225

6.38" X 6.06" X 3.35", 1-COMP, PP, HINGED CONTAINER, TRANSLUCENT, CLEAR BASE CLEAR TOP
Quantity: 250 (2 sleeves of 125 ct)
Case Size: 19.09" x 12.40" x 13.19"
Case Cube: 1.81 ft³
Gross Case Weight: 18.01 lbs
Ti/Hi: 7 x 7
UPC Code: 00810054222002

* Not all recycle facilities accept this plastic material type



Shopping Bag

Ready to get carried away.

Features strong and comfortable paper twist handles ensuring safe transport.



Bag Name	Description	Dimensions (Inches)	Colors	Bale Pack	Bale Weight	Bundle GTIN
BHK-S	Shopping bag, small, kraft, heavy weight	8.00" x 4.50" x 10.50"	kraft / white	250	15.30 lbs	00810054220718
BHK-M	Shopping bag, mediem, kraft, heavy weight	10.00" x 5.00" x 13.00"	kraft / white	250	21.10 lbs	00810054220725
BHK-L	Shopping bag, large, kraft, heavy weight	13.00" x 17.00" x 17.00"	kraft / white	250	33.10 lbs	00810054220732
BHK-J	Shopping bag, jumbo, kraft, heavy weight	13.00" x 7.00" x 18.50"	kraft / white	200	37.20 lbs	00810054220749

AVAILABLE COLOR PRINT



White



Kraft



LOGO

Custom Print/Your Brand

The Top Choice for National Brands

Customized Printing

Custom printing on PAPER products

- Premium Paper
- Color Accuracy
- Quality Consistency
- On-Time Delivery



To-Go Drinkware

Catering

Tableware

Paper Hot Cups

Not your average beverage cups.

Single Wall



PHC-SW-08

8 OZ HOT CUP, NON-PRINTED
Quantity: 1000 (20 sleeves of 50 ct)
Case Size: 16.50" x 13.25" x 13.13"
Case Cube: 1.66 ft³
Gross Case Weight: 20.00 lbs
Ti/Hi: 8 x 5
UPC Code: 00854772007855
FOR LID USE: 8 OZ LID, 80MM, HCSL-08-WH (PP)



PHC-SW-10

10 OZ HOT CUP, NON-PRINTED
Quantity: 1000 (20 sleeves of 50 ct)
Case Size: 18.13" x 14.50" x 23.25"
Case Cube: 3.54 ft³
Gross Case Weight: 26.00 lbs
Ti/Hi: 6 x 4
UPC Code: 00854772007862



PHC-SW-12

12 OZ HOT CUP, NON-PRINTED
Quantity: 1000 (20 sleeves of 50 ct)
Case Size: 18.38" x 14.50" x 19.00"
Case Cube: 2.93 ft³
Gross Case Weight: 27.00 lbs
Ti/Hi: 6 x 5
UPC Code: 00854772007879



PHC-SW-16

16 OZ HOT CUP, NON-PRINTED
Quantity: 1000 (20 sleeves of 50 ct)
Case Size: 18.38" x 14.50" x 25.50"
Case Cube: 3.93 ft³
Gross Case Weight: 34.00 lbs
Ti/Hi: 6 x 4
UPC Code: 00854772007886



HDWTL-U-BK

12 OZ - 20 OZ TEAR BACK DOME DOME LID, UNIVERSAL, 93MM, PP, BLACK
Quantity: 1000
Case Size: 19.29" x 15.55" x 10.63"
Case Cube: 1.85 ft³
Gross Case Weight: 10.00 lbs
Ti/Hi: 6 x 9
UPC Code: 00810054221166



HDWTL-U-WH

12 OZ - 20 OZ TEAR BACK DOME DOME LID, UNIVERSAL, 93MM, PP, WHITE
Quantity: 1000
Case Size: 19.29" x 15.55" x 10.63"
Case Cube: 1.85 ft³
Gross Case Weight: 10.00 lbs
Ti/Hi: 6 x 9
UPC Code: 00810054221401



Premium tight fit plastic lids with sip passage and lock mechanism flap



PHC-SW-20

20 OZ HOT CUP, NON-PRINTED
Quantity: 500 (20 sleeves of 25 ct)
Case Size: 18.38" x 14.50" x 16.00"
Case Cube: 2.59 ft³
Gross Case Weight: 18.00 lbs
Ti/Hi: 6 x 5
UPC Code: 00854772007893



PHC-SW-24

24 OZ HOT CUP, NON-PRINTED
Quantity: 500 (20 sleeves of 25 ct)
Case Size: 18.38" x 14.50" x 19.00"
Case Cube: 2.93 ft³
Gross Case Weight: 22.00 lbs
Ti/Hi: 6 x 5
UPC Code: 00854772007909



HCSL-08-BK HCSL-U-BK

SIPPY DOME LID 8 OZ, 80MM / 10 - 24 OZ, 90MM, PP, BLACK
Quantity: 1000 (10 sleeves of 100 ct)
Case Size: 20.09" x 16.22" x 11.00"
Case Cube: 2.07 ft³
Gross Case Weight: 9.00 lbs
Ti/Hi: 12 x 4
UPC Code: 00810054220282



HCSL-U-WH-PS

SIPPY DOME LID 10 - 24 OZ, 90MM, UNIVERSAL, PS, WHITE
Quantity: 1000 (10 sleeves of 100 ct)
Case Size: 18.75" x 7.50" x 17.75"
Case Cube: 1.44 ft³
Gross Case Weight: 13.00 lbs
Ti/Hi: 12 x 4
UPC Code: 0081005422262



PHC-DW-12

12 OZ DOUBLE WALL PAPER HOT CUP, NON-PRINTED
Quantity: 660 (20 sleeves of 33 ct)
Case Size: 18.50" x 14.75" x 19.00"
Case Cube: 3.00 ft³
Gross Case Weight: 18.00 lbs
Ti/Hi: 6 x 5
UPC Code: 00810054221227



PHC-DW-16

16 OZ DOUBLE WALL PAPER HOT CUP, NON-PRINTED
Quantity: 500 (20 sleeves of 25 ct)
Case Size: 18.50" x 14.75" x 19.00"
Case Cube: 3.00 ft³
Gross Case Weight: 18.00 lbs
Ti/Hi: 6 x 5
UPC Code: 00810054221234



PHC-DW-20

20 OZ DOUBLE WALL PAPER HOT CUP, NON-PRINTED
Quantity: 460 (20 sleeves of 23 ct)
Case Size: 18.50" x 14.50" x 19.00"
Case Cube: 2.95 ft³
Gross Case Weight: 18.00 lbs
Ti/Hi: 6 x 5
UPC Code: 00810054221241

To-Go Drinkware

Catering

Tableware

Paper Hot Cups

Premium Insulation.

Double Wall



Double walled design to keep your beverage warm while keeping your hands protected from heat transfer

Premium White

Custom Print



Paper Cold Cups

Most reliable cold cups in all its glory!

- Premium Presentation
- Tight Fit Translucent Plastic Lids with Straw Slot and Identification Buttons



PCC-FL90



12-24 OZ PAPER COLD CUP, FLAT LID, 90MM, PS
 Quantity: 2000 (20 sleeves of 100 ct)
 Case Size: 18.50" x 14.57" x 17.91"
 Case Cube: 2.79 ft³
 Gross Case Weight: 11.00 lbs
 Ti/Hi: 6 x 5
 UPC Code: 00810054220763

PCC-FL107



32 OZ PAPER COLD CUP, FLAT LID, 107MM, PS
 Quantity: 1500 (15 sleeves of 100 ct)
 Case Size: 21.45" x 13.00" x 17.32"
 Case Cube: 2.79 ft³
 Gross Case Weight: 12.00 lbs
 Ti/Hi: 6 x 5
 UPC Code: 00810054220770

PCC12



12 OZ PAPER COLD CUP, NON-PRINTED
 Quantity: 1000 (20 sleeves of 50 ct)
 Case Size: 18.38" x 14.50" x 19.00"
 Case Cube: 2.93 ft³
 Gross Case Weight: 27.00 lbs
 Ti/Hi: 6 x 5
 UPC Code: 00810054222378

PCC16



16 OZ PAPER COLD CUP, NON-PRINTED
 Quantity: 1320 (24 sleeves of 55 ct)
 Case Size: 23.50" x 13.25" x 18.25"
 Case Cube: 3.29 ft³
 Gross Case Weight: 34.00 lbs
 Ti/Hi: 6 x 5
 UPC Code: 00810054221289

PCC21



21 OZ PAPER COLD CUP, NON-PRINTED
 Quantity: 960 (24 sleeves of 40 ct)
 Case Size: 23.50" x 13.25" x 18.25"
 Case Cube: 3.29 ft³
 Gross Case Weight: 30.00 lbs
 Ti/Hi: 6 x 5
 UPC Code: 00810054221272

PCC32



32 OZ PAPER COLD CUP, NON-PRINTED
 Quantity: 600 (12 sleeves of 50 ct)
 Case Size: 19.25" x 11.75" x 22.98"
 Case Cube: 3.01 ft³
 Gross Case Weight: 28.00 lbs
 Ti/Hi: 8 x 4
 UPC Code: 00810054221265

Paper Soup Cups

The ultimate companion for side dishes!

- Holds Hot and Cold Soups
- Premium Presentation
- Tight Fit Translucent Plastic Lids
- Visual Appeal
- Universal Lids



PPSL-1000

7, 8, 12 AND 16T OZ FLAT LID 3.8" DIAMETER, UNIVERSAL, TRANSLUCENT, PP
 Quantity: 1000 (20 sleeves of 50 ct)
 Case Size: 20.09" x 16.22" x 11.00"
 Case Cube: 2.07 ft³
 Gross Case Weight: 10.00 lbs
 Ti/Hi: 6 x 8
 UPC Code: 00810054220114



PSC-07-1000

7 OZ SOUP CUP, NON-PRINTED
 Quantity: 1000 (20 sleeves of 50 ct)
 Case Size: 19.50" x 15.63" x 17.00"
 Case Cube: 3.00 ft³
 Gross Case Weight: 16.00 lbs
 Ti/Hi: 6 x 5
 UPC Code: 00810054220466



PPSL1000-14 NEW

14 OZ FLAT LID, 4.33" DIAMETER, TRANSLUCENT, PP
 Quantity: 1000 (20 sleeves of 50 ct)
 Case Size: 22.00" x 18.00" x 10.75"
 Case Cube: 2.46 ft³
 Gross Case Weight: 13.00 lbs
 Ti/Hi: 4 x 8
 UPC Code: 00810054222460



PSC-14-1000 NEW

14 OZ SOUP CUP, NON-PRINTED
 Quantity: 1000 (20 sleeves of 50 ct)
 Case Size: 21.65" x 17.52" x 17.32"
 Case Cube: 3.80 ft³
 Gross Case Weight: 28.00 lbs
 Ti/Hi: 4 x 5
 UPC Code: 00810054220817



PSC-08-1000

8 OZ SOUP CUP, NON-PRINTED
 Quantity: 1000 (20 sleeves of 50 ct)
 Case Size: 19.75" x 15.13" x 19.50"
 Case Cube: 3.37 ft³
 Gross Case Weight: 22.00 lbs
 Ti/Hi: 6 x 4
 UPC Code: 00810054220305



PSC-12-1000

12 OZ SOUP CUP, NON-PRINTED
 Quantity: 1000 (20 sleeves of 50 ct)
 Case Size: 19.75" x 15.13" x 19.50"
 Case Cube: 3.37 ft³
 Gross Case Weight: 25.00 lbs
 Ti/Hi: 6 x 4
 UPC Code: 00810054220565



PSC-16-1000

16 OZ SOUP CUP, NON-PRINTED
 Quantity: 1000 (20 sleeves of 50 ct)
 Case Size: 19.38" x 15.50" x 20.50"
 Case Cube: 3.56 ft³
 Gross Case Weight: 32.00 lbs
 Ti/Hi: 6 x 4
 UPC Code: 00810054220572

Premium White

Custom Print



PET Cups

The advantages are crystal clear!

Lightweight, Durable, Recyclable* and Convenient.

Whatever your cold drink of choice, you can count on Ecopax's crystal clear disposable grab and go PET cups to serve up the chill factor.

- 5 convenient cup sizes
- Flat, Dome or Sip-Thru Dome lids
- Crystal clear
- Recyclable material
- Smooth round ring cups
- Cups can withstand temperature up to 140F



NEW

Strawless Sip-Thru Dome Lid

Large cup and lid (107mm)

PECC-32

32 OZ COLD CUP, 107MM, CLEAR, PET, CRYSTALLINE
Quantity: 500 (20 sleeves of 25 ct)
Case Size: 21.08" x 17.14" x 15.17"
Case Cube: 3.17 ft³
Gross Case Weight: 26.00 lbs
Ti/Hi: 6 x 6
UPC Code: 00851654004759



PE-FL107

FLAT LID FOR 32 OZ CUP, 107MM, CLEAR, PET, CRYSTALLINE
Quantity: 500 (20 sleeves of 25 ct)
Case Size: 21.87" x 8.08" x 9.26"
Case Cube: 0.95 ft³
Gross Case Weight: 5.00 lbs
Ti/Hi: 9 x 8
UPC Code: 00851654004803



Universal cups and lids (98mm)

PE-DL98

DOMED LID FOR 12/16/20/24 OZ CUP, 98MM, CLEAR, PET, CRYSTALLINE
Quantity: 1000 (20 sleeves of 50 ct)
Case Size: 20.88" x 19.31" x 8.47"
Case Cube: 1.98 ft³
Gross Case Weight: 10.00 lbs
Ti/Hi: 6 x 10
UPC Code: 00851654004780



PE-FL98

FLAT LID FOR 12/16/20/24 OZ CUP, 98MM, CLEAR, PET, CRYSTALLINE
Quantity: 1000 (20 sleeves of 50 ct)
Case Size: 20.88" x 14.97" x 8.47"
Case Cube: 1.53 ft³
Gross Case Weight: 7.00 lbs
Ti/Hi: 6 x 10
UPC Code: 00851654004797



NEW

PE-SL98

SIP-THRU DOME LID FOR 12/16/20/24 OZ CUP, 98MM, CLEAR, PET, CRYSTALLINE
Quantity: 1000 (10 sleeves of 100 ct)
Case Size: 20.50" x 8.38" x 16.00"
Case Cube: 1.59 ft³
Gross Case Weight: 11.00 lbs
Ti/Hi: 5 x 10
UPC Code: 00810054221739



PECC-12

12 OZ COLD CUP, 98MM, CLEAR, PET, CRYSTALLINE
Quantity: 1000 (20 sleeves of 50 ct)
Case Size: 19.70" x 15.76" x 17.73"
Case Cube: 3.19 ft³
Gross Case Weight: 24.00 lbs
Ti/Hi: 6 x 7
UPC Code: 00851654004711



PECC-16

16 OZ COLD CUP, 98MM, CLEAR, PET, CRYSTALLINE
Quantity: 1000 (20 sleeves of 50 ct)
Case Size: 20.29" x 16.75" x 17.93"
Case Cube: 3.53 ft³
Gross Case Weight: 30.00 lbs
Ti/Hi: 6 x 5
UPC Code: 00851654004728



PECC-20

20 OZ COLD CUP, 98MM, CLEAR, PET, CRYSTALLINE
Quantity: 1000 (20 sleeves of 50 ct)
Case Size: 19.70" x 15.76" x 21.47"
Case Cube: 3.86 ft³
Gross Case Weight: 37.00 lbs
Ti/Hi: 6 x 5
UPC Code: 00851654004735



PECC-24

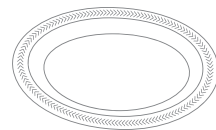
24 OZ COLD CUP, 98MM, CLEAR, PET, CRYSTALLINE
Quantity: 1000 (20 sleeves of 50 ct)
Case Size: 20.29" x 15.00" x 20.00"
Case Cube: 3.52 ft³
Gross Case Weight: 38.40 lbs
Ti/Hi: 6 x 5
UPC Code: 00851654004742



Institutional Foam Plates

Classic.
Fan favorite.

Efficient manufacturing process use less energy and reduce environment footprint for polystyrene packaging.



AP9125

9" WHITE FOAM PLATE

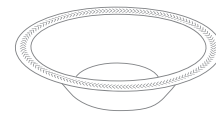
Quantity: 500 (4 sleeves of 125 ct)
Case Size: 18.06" x 18.06" x 13.75"
Case Cube: 2.60 ft³
Gross Case Weight: 8 lbs
Ti/Hi: 6 x 6



AP9125-3

9" WHITE FOAM PLATE 3 COMPARTMENT

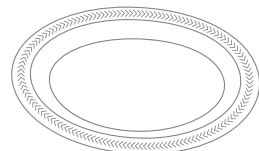
Quantity: 500 (4 sleeves of 125 ct)
Case Size: 18.25" x 18.25" x 12.13"
Case Cube: 2.34 ft³
Gross Case Weight: 8 lbs
Ti/Hi: 6 x 7



AP12125

12 OZ WHITE FOAM BOWL

Quantity: 1000 (8 sleeves of 125 ct)
Case Size: 24.25" x 16.88" x 12.13"
Case Cube: 2.87 ft³
Gross Case Weight: 8.22 lbs
Ti/Hi: 6 x 5



AP125-10

10.25" WHITE FOAM PLATE

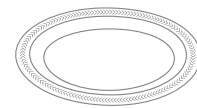
Quantity: 500 (4 sleeves of 125 ct)
Case Size: 21.50" x 17.00" x 20.50"
Case Cube: 4.34 ft³
Gross Case Weight: 10.2 lbs
Ti/Hi: 6 x 4



AP125-103

10.25" WHITE FOAM PLATES 3 COMPARTMENT

Quantity: 500 (4 sleeves of 125 ct)
Case Size: 21.50" x 17.00" x 20.50"
Case Cube: 4.34 ft³
Gross Case Weight: 10.2 lbs
Ti/Hi: 6 x 4



AP6125

6" WHITE FOAM PLATE

Quantity: 1000 (8 sleeves of 125 ct)
Case Size: 24.25" x 12.88" x 12.13"
Case Cube: 2.19 ft³
Gross Case Weight: 7.56 lbs
Ti/Hi: 6 x 7

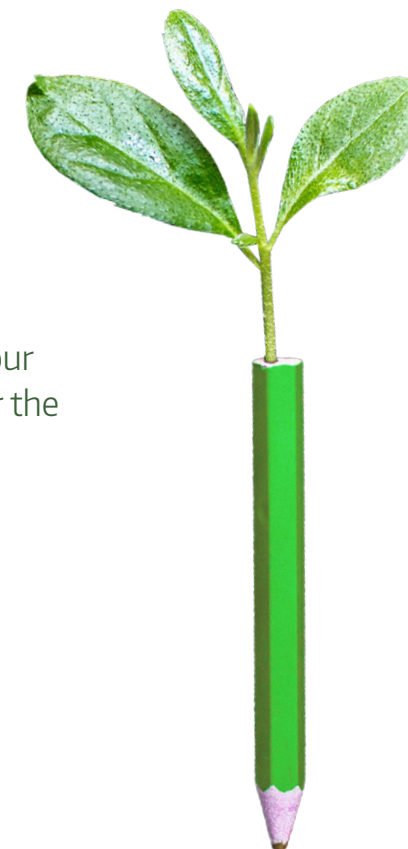


Foam School Trays

Economical
solution for
bright minds.

Sturdy, lightweight, and versatile—our cost-effective foam tray is perfect for the busy school cafeteria.

- 5-Compartment Portion Control
- Stackable
- Lightweight



ST-8 ST-8-BK

WHITE or BLACK

5-COMP SERVING TRAY, SQUARE, FOAM, WHITE OR BLACK

Quantity: 500 (4 sleeves of 125 ct)
Case Size: 10.125" x 8.188" x 1.063"
Case Cube: 4.87 ft³
Gross Case Weight: 12.00 lbs
Ti/Hi: 5 x 4

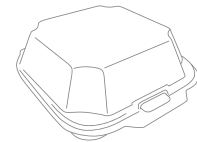
Food Service Foam Containers

Economical value
at its simplest form.

Consistent
high quality,
every time.

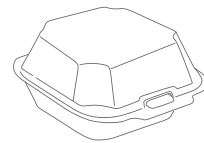


Lightweight polystyrene material provides easy transportation and handling while keeping content well insulated.



224

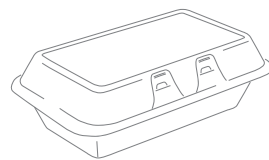
5.13" X 5.00" X 2.50", 1-COMP,
NON-VENTED, REGAL/PLAIN
Quantity: 500 (4 sleeves of 125 ct)
Case Size: 28.25" x 10.75" x 20.00"
Case Cube: 3.51 ft³
Gross Case Weight: 8.55 lbs
Ti/Hi: 6 x 4



225

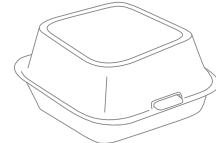
BLACK option

5.94" X 5.50" X 3.38", 1-COMP,
NON-VENTED, CERES/PLAIN
Quantity: 500 (4 sleeves of 125 ct)
Case Size: 28.00" x 12.25" x 22.25"
Case Cube: 4.42 ft³
Gross Case Weight: 9.76 lbs
Ti/Hi: 6 x 4



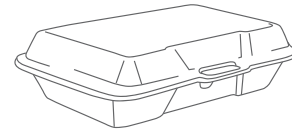
204-Ceres

8.69" X 5.47" X 2.94", 1-COMP,
NON-VENTED, CERES/PLAIN
Quantity: 200 (2 sleeves of 100 ct)
Case Size: 23.50" x 13.00" x 18.25"
Case Cube: 3.23 ft³
Gross Case Weight: 7.78 lbs
Ti/Hi: 6 x 5



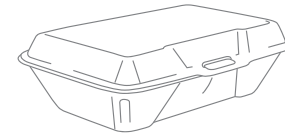
226

6.25" X 6.38" X 3.00", 1-COMP,
NON-VENTED, PLAIN,
HINGED CONTAINER
Quantity: 400 (4 sleeves of 100 ct)
Case Size: 28.25" x 13.25" x 25.75"
Case Cube: 5.58 ft³
Gross Case Weight: 9.89 lbs
Ti/Hi: 6 x 4



206-Ceres

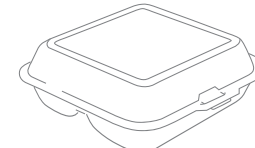
9.25" X 6.50" X 2.25", 1-COMP,
NON-VENTED, SHALLOW, CERES
Quantity: 200 (2 sleeves of 100 ct)
Case Size: 25.00" x 13.25" x 18.88"
Case Cube: 3.62 ft³
Gross Case Weight: 8.00 lbs
Ti/Hi: 6 x 5



205

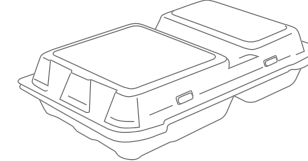
BLACK option

9.25" X 6.38" X 2.88", 1-COMP,
NON-VENTED, CERES/PLAIN
Quantity: 200 (2 sleeves of 100 ct)
Case Size: 26.00" x 13.00" x 18.50"
Case Cube: 3.62 ft³
Gross Case Weight: 8.00 lbs
Ti/Hi: 6 x 5



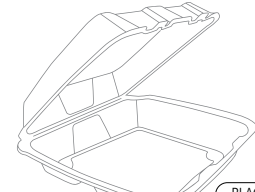
241

8.00" X 7.50" X 2.25", 3-COMP,
NON-VENTED, REGAL/PLAIN
Quantity: 200 (2 sleeves of 100 ct)
Case Size: 23.75" x 16.00" x 16.00"
Case Cube: 3.52 ft³
Gross Case Weight: 8.00 lbs
Ti/Hi: 5 x 5



1320

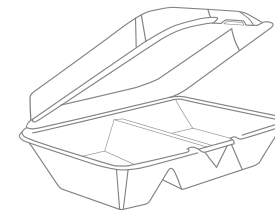
13.00" X 8.00" X 3.00", 2-COMP,
VENTED
Quantity: 200 (2 sleeves of 100 ct)
Case Size: 26.75" x 18.13" x 27.13"
Case Cube: 7.61 ft³
Gross Case Weight: 12.62 lbs
Ti/Hi: 4 x 3



RE993s

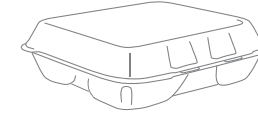
BLACK option
VENT HOLE option

9.50" X 9.25" X 3.75", 1-COMP,
U-VENT-HINGED CONTAINER,
REGAL/PLAIN
Quantity: 200 (2 sleeves of 100 ct)
Case Size: 19.25" x 18.25" x 18.50"
Case Cube: 3.76 ft³
Gross Case Weight: 9.32 lbs
Ti/Hi: 6 x 5



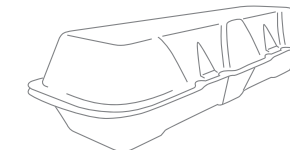
20502

9.25" X 6.38" X 2.88", 2-COMP,
NON-VENTED, CERES/PLAIN
Quantity: 200 (2 sleeves of 100 ct)
Case Size: 26.00" x 13.00" x 18.50"
Case Cube: 3.62 ft³
Gross Case Weight: 8.00 lbs
Ti/Hi: 6 x 5



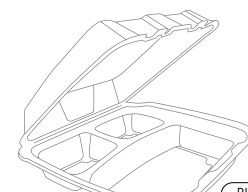
22310s

7.63" X 8.31" X 2.25", 1-COMP,
MEDIUM (SHALLOW),
DOUBLE TAB
Quantity: 200 (2 sleeves of 100 ct)
Case Size: 22.38" x 15.25" x 17.38"
Case Cube: 3.43 ft³
Gross Case Weight: 8.00 lbs
Ti/Hi: 5 x 5



1243

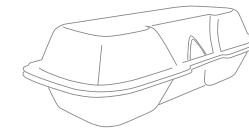
13.19" X 4.38" X 3.13", HOAGIE
CONTAINER, NON-VENTED
Quantity: 200 (2 sleeves of 100 ct)
Case Size: 24.50" x 13.75" x 19.00"
Case Cube: 3.70 ft³
Gross Case Weight: 7.78 lbs
Ti/Hi: 6 x 5



RE993

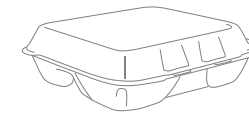
BLACK option
VENT HOLE option

9.50" X 9.25" X 3.75", 3-COMP,
U-VENT-HINGED CONTAINER,
REGAL/PLAIN
Quantity: 200 (2 sleeves of 100 ct)
Case Size: 19.25" x 18.25" x 18.50"
Case Cube: 3.76 ft³
Gross Case Weight: 9.32 lbs
Ti/Hi: 6 x 5



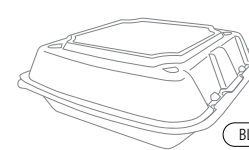
622

7.44" X 3.50" X 2.19",
SMALL HOT DOG CONTAINER,
NON-VENTED
Quantity: 500 (4 sleeves of 125 ct)
Case Size: 26.50" x 14.63" x 15.50"
Case Cube: 3.48 ft³
Gross Case Weight: 8.00 lbs
Ti/Hi: 6 x 6



22310

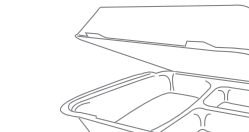
7.63" X 8.31" X 2.25", 3-COMP,
MEDIUM (SHALLOW),
DOUBLE TAB
Quantity: 200 (2 sleeves of 100 ct)
Case Size: 22.38" x 15.25" x 17.38"
Case Cube: 3.43 ft³
Gross Case Weight: 8.00 lbs
Ti/Hi: 5 x 5



RE883s

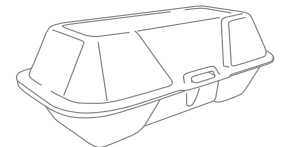
BLACK option
VENT HOLE option

8.00" X 8.00" X 3.00", 1-COMP,
U-VENT-HINGED CONTAINER,
REGAL/PLAIN
Quantity: 200 (2 sleeves of 100 ct)
Case Size: 19.25" x 16.75" x 17.25"
Case Cube: 3.22 ft³
Gross Case Weight: 7.20 lbs
Ti/Hi: 6 x 5



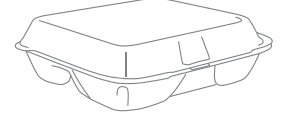
1010

9.84" X 9.72" X 3.63", 3-COMP,
NON-VENTED
Quantity: 200 (2 sleeves of 100 ct)
Case Size: 28.00" x 19.50" x 19.13"
Case Cube: 6.04 ft³
Gross Case Weight: 10.56 lbs
Ti/Hi: 5 x 5



843

8.50" X 4.16" X 3.09", 1-COMP,
HOAGIE CONTAINER
Quantity: 500 (4 sleeves of 125 ct)
Case Size: 27.00" x 17.00" x 17.00"
Case Cube: 4.52 ft³
Gross Case Weight: 9.76 lbs
Ti/Hi: 5 x 5



23300

9.25" X 8.00" X 2.75", 3-COMP,
LARGE, SINGLE TAB
Quantity: 200 (2 sleeves of 100 ct)
Case Size: 23.75" x 16.50" x 18.38"
Case Cube: 4.17 ft³
Gross Case Weight: 8.00 lbs
Ti/Hi: 5 x 5



RE883

VENT HOLE option

8.00" X 8.00" X 3.00", 3-COMP,
U-VENT-HINGED CONTAINER,
REGAL/PLAIN
Quantity: 200 (2 sleeves of 100 ct)
Case Size: 19.25" x 16.75" x 17.25"
Case Cube: 3.22 ft³
Gross Case Weight: 7.20 lbs
Ti/Hi: 6 x 5





100% BIODEGRADABLE 100% COMPOSTABLE

The logo for ecopax, featuring the word "ecopax" in a lowercase, sans-serif font. A green swoosh underline is positioned above the "x".

(T) 484-546-0700

(F) 484-546-0703

welcome@ecopaxinc.com

3600 Glover Road,
Easton, PA 18040

www.ecopaxinc.com

Access to our
product catalog

