

ecopax

EcoView

EcoView

Savory meal,
deliciously visible.

Clear Top, Black Base

EcoView Features:

- Ultra durable, great for delivery
- Cut resistant
- Microwavable
- Grease and moisture resistant
- Textured floor design with deep channels
- Vents prevent condensation
- Stack lock feature boosts transport stability
- Slim pack - Reduced stack height for efficient storage
- Enhanced clear lid for premium presentation
- Snap lock closure ensures secure transporting



Grease Resistant • Durable • Recyclable* • PFAS Free



Hinged design
brings more convenience



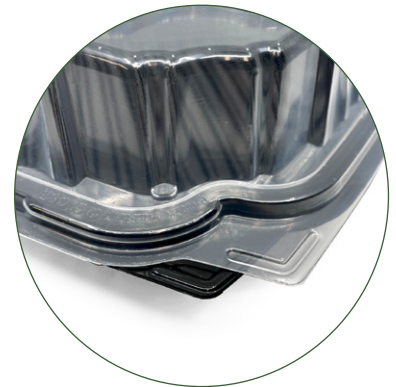
SMART DESIGN

Textured floor design
with deep channels



FUNCTIONALITY

Vent holes for better airing



SECURE FEATURE

Click and lock mechanism



EcoView



Clear Top, Black Base



PVS205-BK

9.76" X 6.54" X 3.31", 1-COMP, PP, HINGED CONTAINER, BLACK BASE CLEAR TOP
Quantity: 280 (2 sleeves of 140 ct)
Case Size: 23.90" x 13.31" x 19.76"
Case Cube: 3.64 ft³
Gross Case Weight: 30.00 lbs
Ti/Hi: 6 x 4
UPC Code-BK: 00810054221692



PVS225-BK

6.65" X 6.57" X 3.19", 1-COMP, PP, HINGED CONTAINER, BLACK BASE CLEAR TOP
Quantity: 280 (2 sleeves of 140 ct)
Case Size: 24.02" x 13.62" x 13.39"
Case Cube: 2.54 ft³
Gross Case Weight: 20.00 lbs
Ti/Hi: 5 x 7
UPC Code-BK: 00810054221685



PVS881-BK

8.07" X 8.07" X 3.03", 1-COMP, PP, HINGED CONTAINER, BLACK BASE CLEAR TOP
Quantity: 270 (2 sleeves of 135 ct)
Case Size: 23.23" x 16.73" x 16.34"
Case Cube: 3.67 ft³
Gross Case Weight: 29.00 lbs
Ti/Hi: 4 x 5
UPC Code-BK: 00810054222521



PVS991-BK

9.00" X 9.00" X 2.838", 1-COMP, PP, HINGED CONTAINER, BLACK BASE CLEAR TOP
Quantity: 150 (1 sleeve of 150 ct)
Case Size: 19.00" x 9.50" x 18.50"
Case Cube: 1.93 ft³
Gross Case Weight: 21.00 lbs
Ti/Hi: 9 x 5
UPC Code-BK: 00810054221340



PVS993-BK

9.00" X 9.00" X 2.838", 3-COMP, PP, HINGED CONTAINER, BLACK BASE CLEAR TOP
Quantity: 150 (1 sleeve of 150 ct)
Case Size: 23.94" x 9.45" x 18.70"
Case Cube: 2.45 ft³
Gross Case Weight: 21.00 lbs
Ti/Hi: 8 x 5
UPC Code-BK: 00810054221357



PVS101-BK

10.50" X 9.50" X 2.838", 1-COMP, PP, HINGED CONTAINER, BLACK BASE CLEAR TOP
Quantity: 150 (1 sleeve of 150 ct)
Case Size: 20.75" x 10.75" x 19.75"
Case Cube: 2.55 ft³
Gross Case Weight: 25.00 lbs
Ti/Hi: 10 x 5
UPC Code-BK: 00810054220800



PVS103-BK

10.50" X 9.50" X 2.838", 3-COMP, PP, HINGED CONTAINER, BLACK BASE CLEAR TOP
Quantity: 150 (1 sleeve of 150 ct)
Case Size: 23.94" x 10.91" x 20.08"
Case Cube: 3.04 ft³
Gross Case Weight: 25.00 lbs
Ti/Hi: 6 x 4
UPC Code-BK: 00810054222767



(T) 484-546-0700 · (F) 484-546-0703 · welcome@ecopaxinc.com · 3600 Glover Road, Easton, PA 18040 USA

* Not all recycle facilities accept this plastic material type