



Pebble Box Containers

Game changing takeout solution.



Elegant, eco-conscious, durable, and microwaveable



- 40% earth minerals
- BPA & PFAS Free
- Reduce use of plastic
- Smaller environmental footprint
- Microwave-Safe and cut resistant
- Premium quality
- Elegant presentation for a high-end look
- Effective barrier against moisture and grease
- Suitable for both cold and hot applications
- Stackable



PP225
PP225-BK

BLACK or IVORY

6.00" X 6.00" X 3.25", 1-COMP, PP
 Quantity: 250 (2 sleeves of 125 ct)
 Case Size: 19.00" x 12.25" x 12.00"
 Case Cube: 1.616 ft³
 Gross Case Weight: 19.00 lbs
 Ti/Hi: 7 x 8



PP225-BK-480

6.00" X 6.00" X 3.25", 1-COMP, PP
 Quantity: 480 (4 sleeves of 120 ct)
 Case Size: 24.33" x 17.72" x 12.20"
 Case Cube: 3.04 ft³
 Gross Case Weight: 31.00 lbs
 Ti/Hi: 8 x 8



Grease Resistant • Durable • Microwaveable • Reduce Plastic Usage • Reusable • BPA & PFAS Free



PP201-BK-340 (BLACK only)

7.76" X 5.87" X 2.60", 1-COMP, PP
Quantity: 340 (2 sleeves of 170 ct)
Case Size: 17.40" x 12.21" x 15.95"
Case Cube: 1.96 ft³
Gross Case Weight: 26.00 lbs
Ti/Hi: 8 x 6



PP203-300 (IVORY only)

8.13" X 6.5" X 2.63", 1-COMP, PP
Quantity: 300 (2 sleeves of 150 ct)
Case Size: 19.21" x 16.93" x 13.39"
Case Cube: 2.52 ft³
Gross Case Weight: 29.00 lbs
Ti/Hi: 7 x 6



PP204 (IVORY only)

8.86" X 5.86" X 2.79", 1-COMP, PP
Quantity: 150 (1 sleeve of 150 ct)
Case Size: 18.82" x 9.09" x 12.09"
Case Cube: 1.97 ft³
Gross Case Weight: 15.00 lbs
Ti/Hi: 10 x 7



PP206
PP206-BK (BLACK or IVORY)

9.25" X 6.50" X 2.25", 1-COMP, PP
Quantity: 150 (1 sleeve of 150 ct)
Case Size: 18.50" x 9.45" x 13.39"
Case Cube: 1.35 ft³
Gross Case Weight: 18.00 lbs
Ti/Hi: 10 x 7



PP241 (IVORY only)

7.88" X 8.00" X 2.50", 3-COMP, PP
Quantity: 150 (1 sleeve of 150 ct)
Case Size: 18.50" x 7.87" x 15.75"
Case Cube: 1.33 ft³
Gross Case Weight: 19.51 lbs
Ti/Hi: 12 x 6



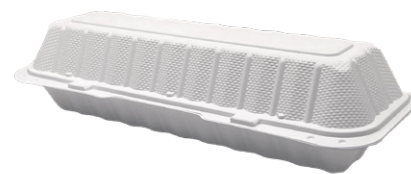
PPs241 (IVORY only)

7.88" X 8.00" X 2.35", 3-COMP, PP
Quantity: 150 (1 sleeve of 150 ct)
Case Size: 18.50" x 7.87" x 15.75"
Case Cube: 1.33 ft³
Gross Case Weight: 20.00 lbs
Ti/Hi: 12 x 6



PP622-BK (BLACK only)

7.44" X 3.50" X 2.19" SMALL HOT
DOG CONTAINER, 1 COMP, PP,
HINGE CONTAINER
Quantity: 300 (2 sleeves of 150 ct)
Case Size: 19.02" x 8.50" x 14.02"
Case Cube: 1.32 ft³
Gross Case Weight: 13.00 lbs
Ti/Hi: 10 x 6



PP1243 (IVORY only)

13.23" X 4.72" X 3.31" HOAGIE
CONTAINER, NON-VENTED, PP
Quantity: 150 (1 sleeve of 150 ct)
Case Size: 18.5" x 10.28" x 13.62"
Case Cube: 1.50 ft³
Gross Case Weight: 19.53 lbs
Ti/Hi: 10 x 7



PP883 (BLACK or IVORY)

8.00" X 8.00" X 3.00", 3-COMP, PP
Quantity: 150 (1 sleeve of 150 ct)
Case Size: 18.50" x 8.25" x 17.00"
Case Cube: 1.50 ft³
Gross Case Weight: 22.00 lbs
Ti/Hi: 10 x 4



PP883s (BLACK or IVORY)

8.00" X 8.00" X 3.00", 1-COMP, PP
Quantity: 150 (1 sleeve of 150 ct)
Case Size: 18.50" x 8.25" x 17.00"
Case Cube: 1.50 ft³
Gross Case Weight: 22.00 lbs
Ti/Hi: 10 x 4



PP993 (BLACK or IVORY)

9.13" X 8.81" X 3.00", 3-COMP, PP
Quantity: 150 (1 sleeve of 150 ct)
Case Size: 20.50" x 9.00" x 18.50"
Case Cube: 1.98 ft³
Gross Case Weight: 28.00 lbs
Ti/Hi: 10 x 5



PP993s (BLACK or IVORY)

9.13" X 8.81" X 3.00", 1-COMP, PP
Quantity: 150 (1 sleeve of 150 ct)
Case Size: 20.50" x 9.00" x 18.50"
Case Cube: 1.98 ft³
Gross Case Weight: 28.00 lbs
Ti/Hi: 10 x 5



(T) 484-546-0700 • (F) 484-546-0703 • welcome@ecopaxinc.com • 3600 Glover Road, Easton, PA 18040 USA

* Not all recycle facilities accept this plastic material type

Version 20241024

* Not all recycle facilities accept this plastic material type